

Table - User Manual

Introduction

Table is a plugin for Rhino 3D, designed to add the possibility to create, import or edit spreadsheets in your Rhino document.

Plugin installation

Overview

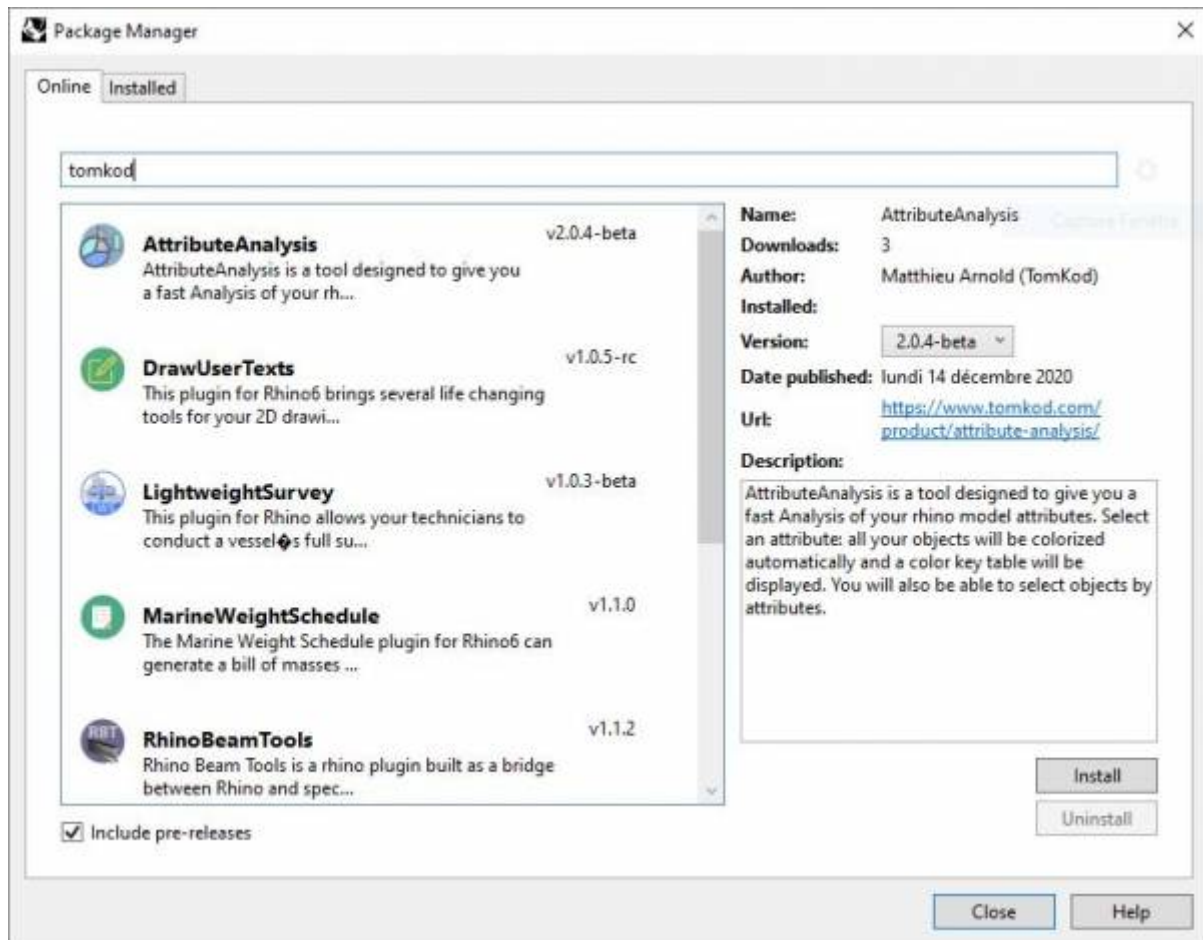
The plugin installer can be downloaded at: <https://www.tomkod.com/product/tables/>

A free trial is included, and yearly licenses can be purchased on the aforementioned page.

Table works either for Rhino 5¹⁾, Rhino 6²⁾ and Rhino7³⁾, but some features are not included in the Rhino 5 version.

Yak

Our plugins are also compatible with Yak, Rhino's new package manager ⁴⁾, which is basically an application store for Rhino. You just need to call Rhino's command ***_PackageManager***:



You can also install from the repository with the following command line:

```
"D:\Program Files\Rhino 6\System\Yak.exe" install 'PluginName'
```

If you add this in a batch file (*.bat) at windows startup, it is probably the best way to keep all your plugins up-to-date 😊



```
C:\WINDOWS\system32\cmd.exe

C:\>"C:\Program Files\Rhino 6\System\Yak.exe" install PluginName
Downloading PluginName (X.X.X)...
Downloaded PluginName (X.X.X)
Installing PluginName (X.X.X)...
Successfully installed PluginName (X.X.X)

C:\>
```

License activation

Prerequisites

The free evaluation can be used once per computer, and requires network access to www.license.tomkod.com

The license activation requires network access to www.tomkod.com

Please check your firewall in case of failure.

Activation form

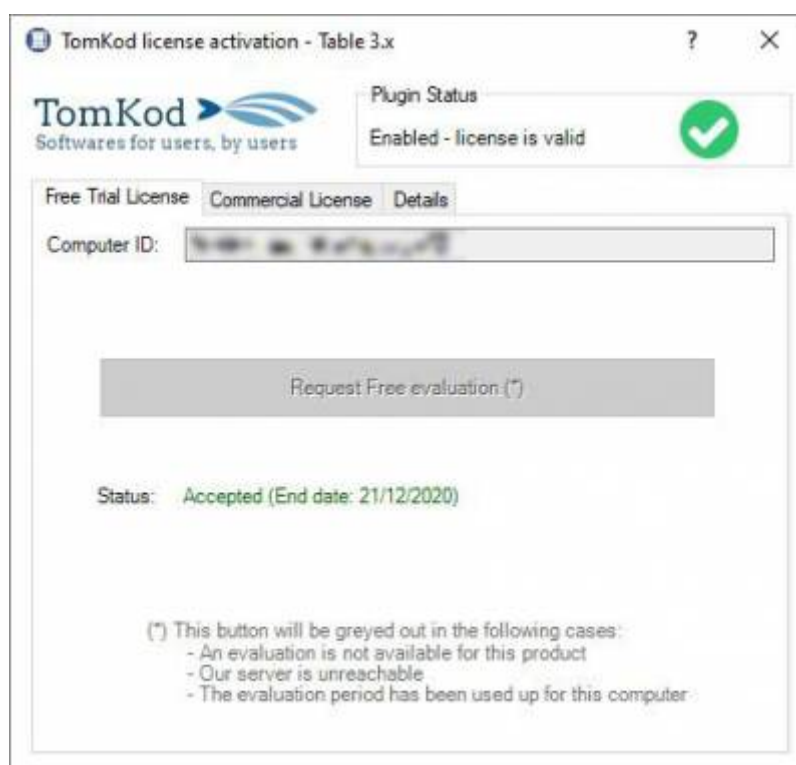
The activation window automatically shows up when the plugin is loading and a valid license or trial is not registered. If you want to see, change or remove your license while the plugin is already loaded, you can use the Rhino commands **PluginName_License**.

Activation status is always visible on the upper right corner of the form, if the icon is green your plugin will be enabled:



Trial Tab

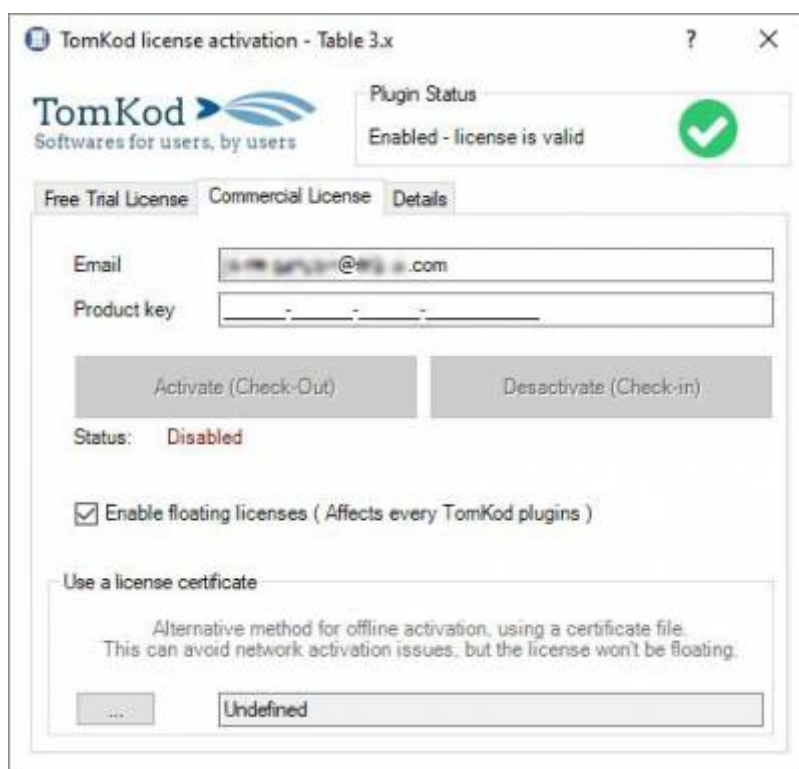
This first tab is dedicated to the trial requests. Your trial status is displayed, and the button is disabled if a trial is not available for your computer (Your trial has already been activated, or the server is unreachable)



Commercial Tab

This tab's two main buttons let you Check-out (Activate) or Check-in (Desactivate) your license from

our license server.



When the checkbox “*Enable floating licenses*” is checked, every TomKod's plugin will try to deactivate the license automatically when closing (Making it available for another of your computers)

Finally, a license certificate (*.TkLic) can be selected at the bottom of this tab. It allows to activate a license offline, but the license won't be floating anymore. If you need one, contact us at <https://www.tomkod.com/contact/>

Toolbar

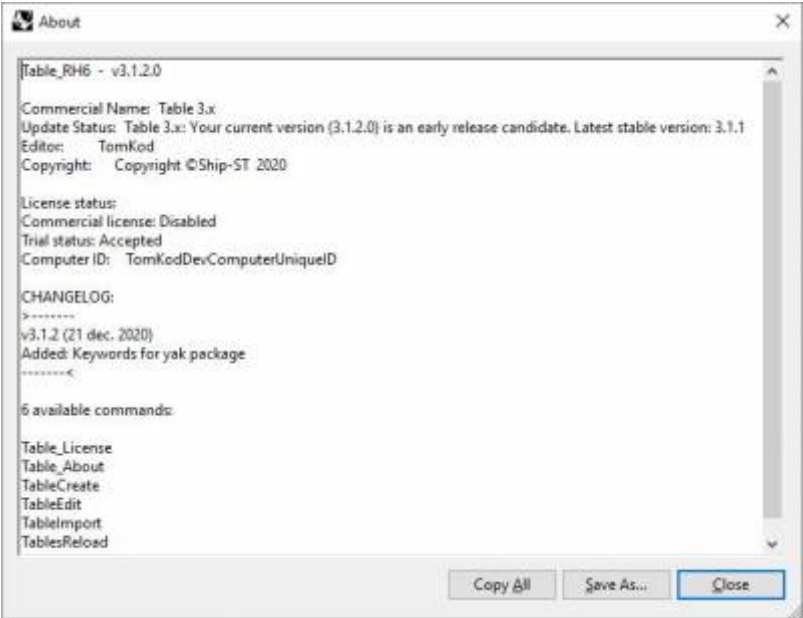
The toolbars for Rhino are always included in your plugins installation directory, or can be downloaded [here](#).

You just have to drag/drop the file “Tomkod.rui” to a rhino window to install them.

Features and commands

Table_About

This command can be used only from the command line prompt. It displays the plugin's current revision and license status.



Table_License

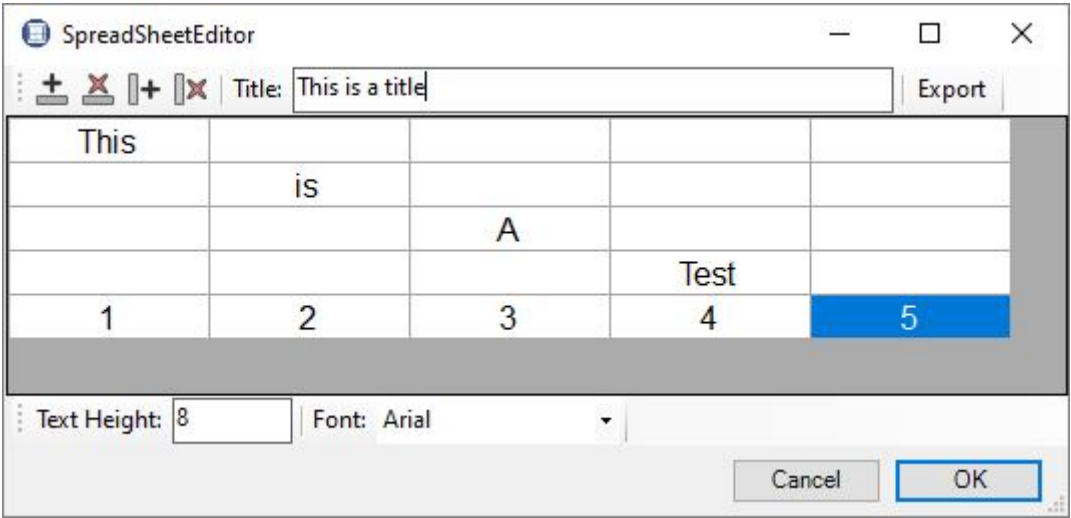
This command can be used only from the command line prompt. It displays the plugin's activation form.

See [license_activation](#).

TableCreate

Walkthrough

The command **TableCreate** allows to create a new table directly from Rhino. At first it will show a basic spreadsheet editor:



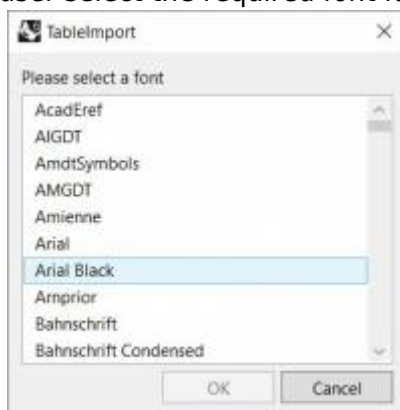
Afterward, the user will be able to pick the Table's insertion point, with a realtime preview. ⁵⁾

This is a title				
This				
	is			
		A		
			Test	
1	2	3	4	5

Options

`TableLocation (FontHeight=10 Corner=UpperLeft TitleRow=None Font)`

- *FontHeight*: Takes a number for the text height.
- *Font*: Pops up a dialog to let the user select the required font family.



TableEdit

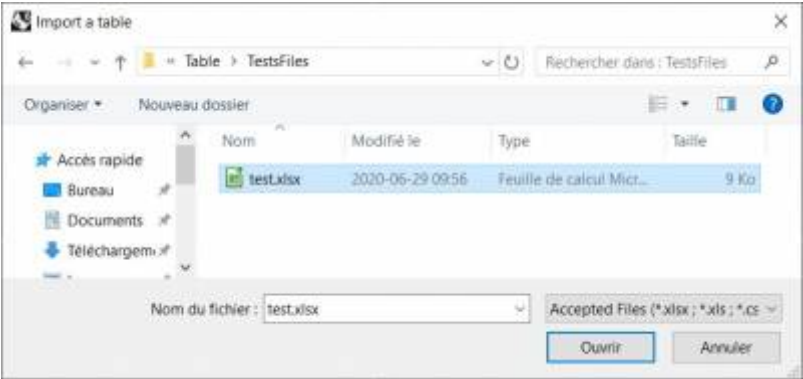
The command **TableEdit**⁶⁾ allows to edit a table created or imported with our plugin. It works exactly the same as the command [TableCreate](#), except that the user will be asked to select an existing table to edit.

The same spreadsheet editor and options are available.

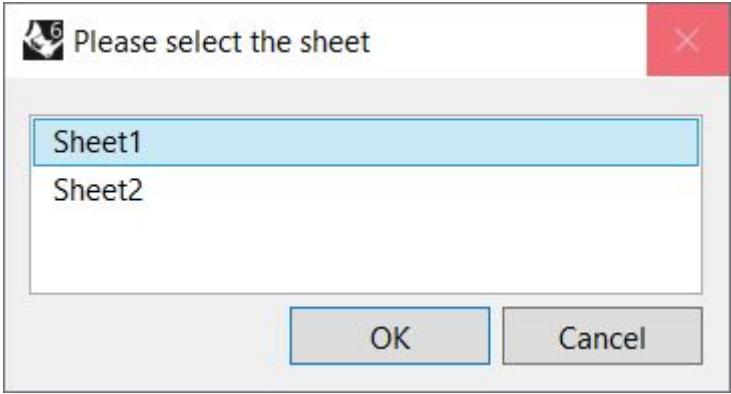
TableImport

Walkthrough

The command **TableImport** allows to import a spreadsheet from an Excel file (.xls, .xlsx) or from a csv file (.csv). After launching the command, a dialog offer to select a compatible file:



If the excel file has several worksheets, the user will be asked to pick one among the list:



Scripted mode

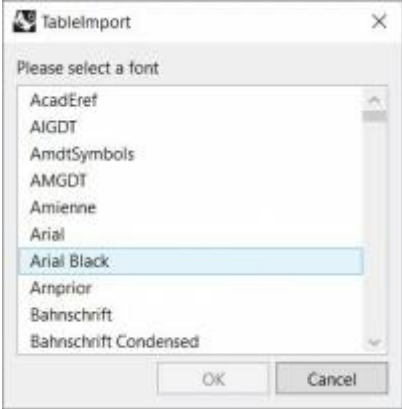
This command can be scripted using RhinoScript or your own macros:

```
Command: -TableImport
Information: In scripted mode, your csv file must use ";" as separator.
Enter a file path to import (*.csv, *.xls, *.xlsx):
```

Options

```
TableLocation [ FontHeight=10 Corner=UpperLeft HeaderRow=None Font= ]
```

- *FontHeight*: Takes a number for the text height.
- *Font*: Pops up a dialog to let the user select the required font family.



TablesReload

This command will reload every tables in the document from their original document (.xls, .xlsx, .csv). The tables whose original file has been deleted or moved will be ignored, as well as tables created inside Rhino.

1)

Rhino5.12 or later

2)

Rhino6.15 or later

3)

Tested up to Rhino 7.1

4)

Rhino 6 or later only, with graphic user interface for Rhino7 only

5)

In rhino5, the preview might not display the texts with the selected font

6)

Only available with Rhino 6

From:

<https://wiki.tomkod.com/> - TomKod knowledge base

Permanent link:

<https://wiki.tomkod.com/doku.php?id=start:plugins:table:table-usermanual&rev=1608562825>

Last update: **2020/12/21 16:00**

