

Selection Tools - User Manual

Introduction

Selection Tools is a plugin for Rhino 3D, designed to provide additional selection tools.

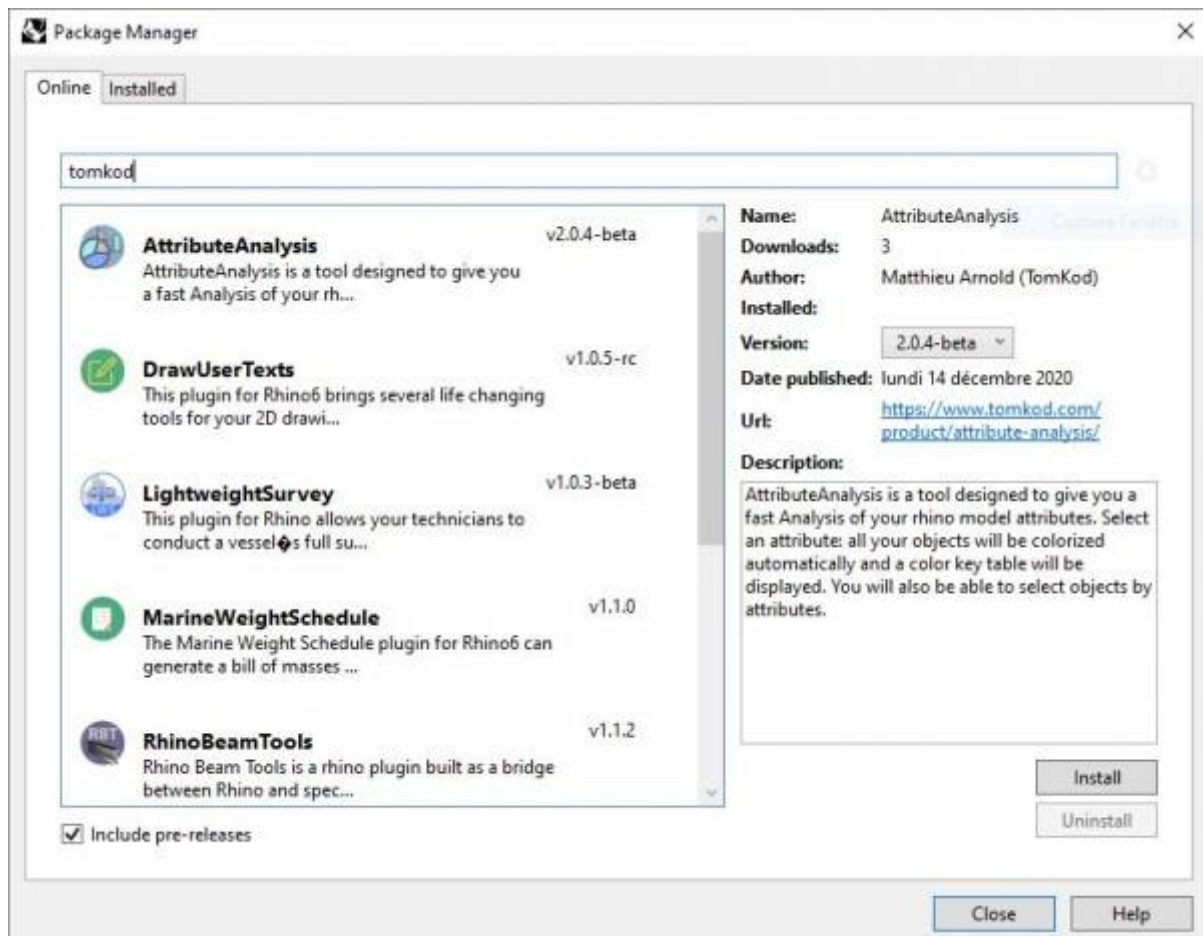
Plugin installation

Overview

The plugin installer can be downloaded at: <https://www.tomkod.com/product/selection-tools/>
A free trial is included, and yearly licenses can be purchased on the aforementioned page.
Selection Tools works for Rhino 6¹⁾ and Rhino7²⁾.

Yak

Our plugins are also compatible with Yak, Rhino's new package manager ³⁾, which is basically an application store for Rhino. You just need to call Rhino's command **PackageManager**:



You can also install from the repository with the following command line:

```
"D:\Program Files\Rhino 6\System\Yak.exe" install 'PluginName'
```

If you add this in a batch file (*.bat) at windows startup, it is probably the best way to keep all your plugins up-to-date 😊



```
C:\WINDOWS\system32\cmd.exe
C:\>"C:\Program Files\Rhino 6\System\Yak.exe" install PluginName
Downloading PluginName (X.X.X)...
Downloaded PluginName (X.X.X)
Installing PluginName (X.X.X)...
Successfully installed PluginName (X.X.X)
C:\>
```

License activation

Prerequisites

The free evaluation can be used once per computer, and requires network access to www.license.tomkod.com

The license activation requires network access to www.tomkod.com

Please check your firewall in case of failure.

Activation form

The activation window automatically shows up when the plugin is loading and a valid license or trial is not registered. If you want to see, change or remove your license while the plugin is already loaded, you can use the Rhino commands **PluginName_License**.

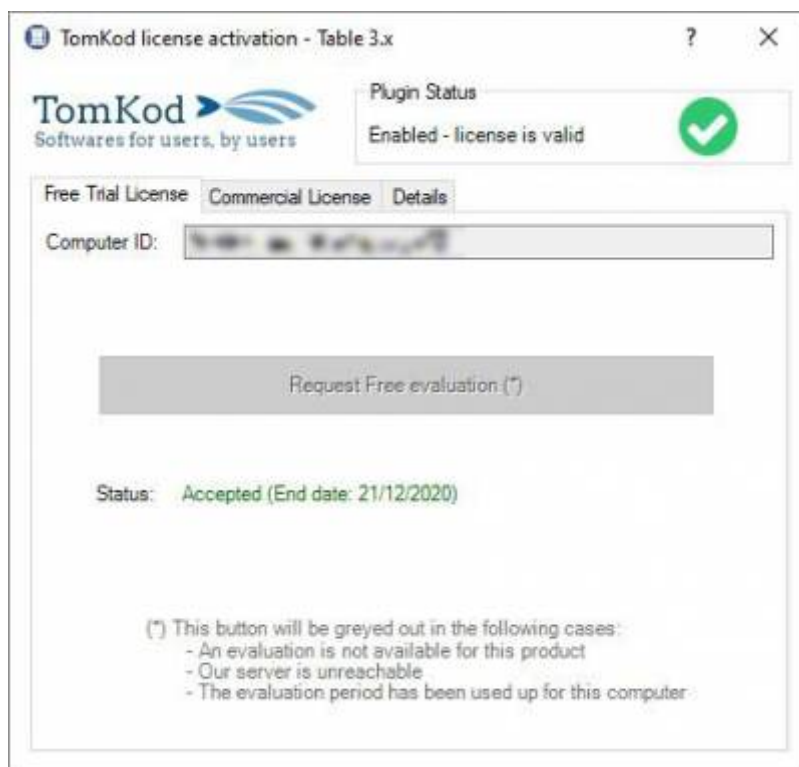
Activation status is always visible on the upper right corner of the form, if the icon is green your plugin will be enabled:



Trial Tab

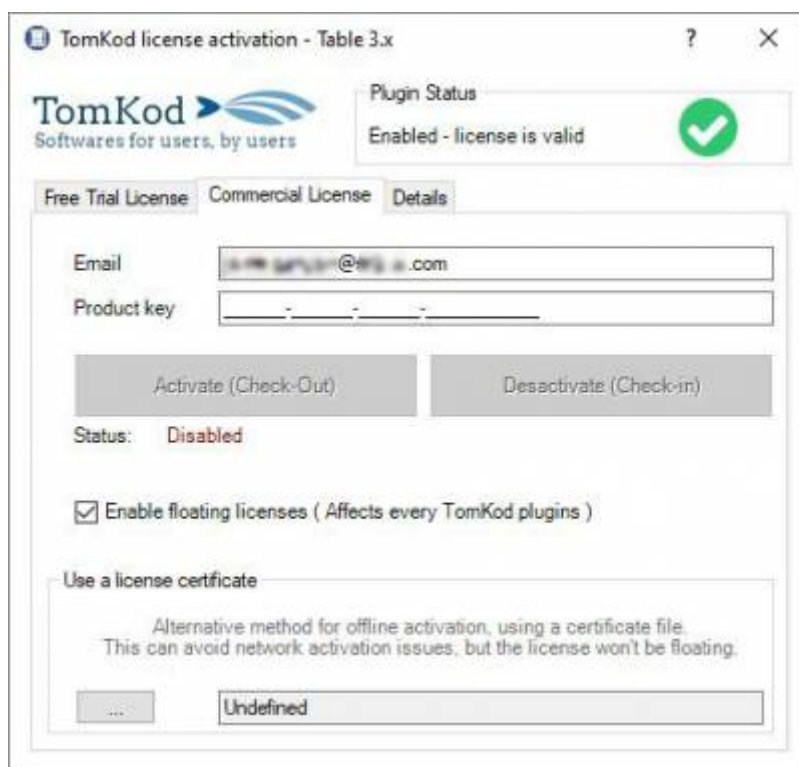
This first tab is dedicated to the trial requests. Your trial status is displayed, and the button is disabled if a trial is not available for your computer (Your trial has already been activated, or the server is

unreachable)



Commercial Tab

This tab's two main buttons let you Check-out (Activate) or Check-in (Desactivate) your license from our license server.



When the checkbox "Enable floating licenses" is checked, every TomKod's plugin will try to deactivate the license automatically when closing (Making it available for another of your computers)

Finally, a license certificate (*.TkLic) can be selected at the bottom of this tab. It allows to activate a

license offline, but the license won't be floating anymore. If you need one, contact us at <https://www.tomkod.com/contact/>

Toolbar

The toolbars for Rhino are always included in your plugins installation directory, or can be downloaded [here](#).

You just have to drag/drop the file "Tomkod.rui" to a rhino window to install them.

Features and commands

SelectionTools_About

This command can be used only from the command line prompt. It displays the plugin's current revision and license status.



Todo

SelectionTools_License

This command can be used only from the command line prompt. It displays the plugin's activation form.

See [license_activation](#).

SelectByName

Almost the same command as *_SelName*, except that instead of choosing the name in a list you pick an object in the model. Every object with the same name will be selected.

Walkthrough



Todo

SelectByType

Pick an object type in a list to select every object of this type. The list only contains the object types existing in the model.

Walkthrough



Todo

SelectByVolume

Select extrusions or closed polysurfaces with the same volume, which is useful to find symmetrical parts or duplicates.

Walkthrough



Todo

Options

Tolerance	Optional tolerance
------------------	--------------------

SelectDuplicatedSolids

Select every duplicated closed polysurfaces based on their volumes and areas.



Symmetrical parts will obviously be considered identical, having both the same areas and volumes.

Walkthrough



Todo

Options

MinimumNumber	A minimum number can be set. For exemple if set to 3, the selection will ignore duplicated items when there are only two of them.
Tolerance	Optional tolerance

SelectOneObjByName

Select only one object per existing name in the whole model. Useful when readying the model before detail drawings.

Walkthrough



Todo

SelectByBorderDetection

Select only one object per existing name in the whole model. Useful when readying the model before detail drawings.

Walkthrough



Todo

1)

Rhino6.15 or later

2)

Tested up to Rhino 7.1

3)

Rhino 6 or later only, with graphic user interface for Rhino7 only

From:
<https://wiki.tomkod.com/> - TomKod knowledge base

Permanent link:
<https://wiki.tomkod.com/doku.php?id=start:plugins:selectiontools:selectiontools-usermanual&rev=1608626748>

Last update: 2020/12/22 09:45

