

# Naval Structure Toolkit - User Manual


## Introduction



TO DO

## Plugin installation

### Overview

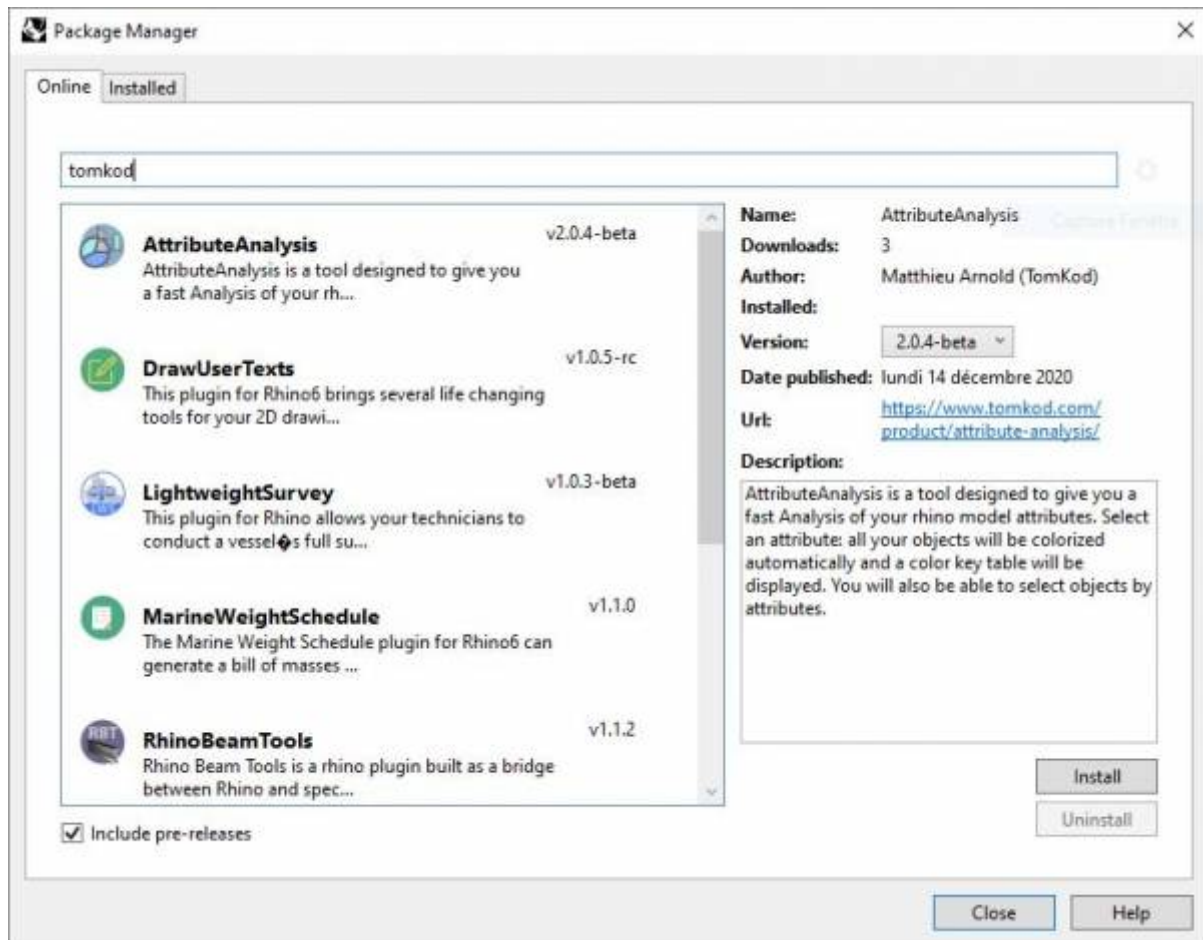
The plugin installer can be downloaded at: 

A free trial is included, and yearly licenses can be purchased on the aforementioned page.

*Naval Structure Toolkit* works for Rhino 6 <sup>1)</sup>, and Rhino7<sup>2)</sup>.

### Yak

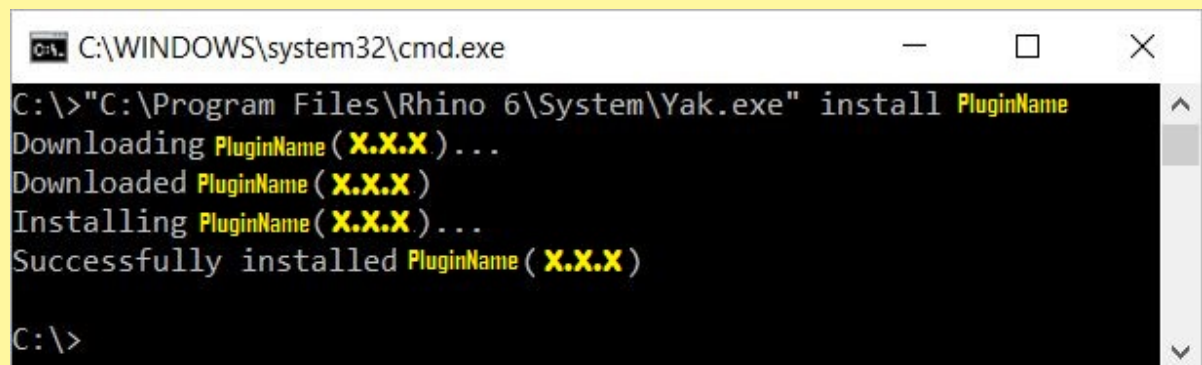
Our plugins are also compatible with Yak, Rhino's new package manager <sup>3)</sup>, which is basically an application store for Rhino. You just need to call Rhino's command **PackageManager**:



You can also install from the repository with the following command line:

```
"D:\Program Files\Rhino 6\System\Yak.exe" install 'PluginName'
```

If you add this in a batch file (\*.bat) at windows startup, it is probably the best way to keep all your plugins up-to-date 😊



## License activation

## Prerequisites

The free evaluation can be used once per computer, and requires network access to [www.license.tomkod.com](http://www.license.tomkod.com)

The license activation requires network access to [www.tomkod.com](http://www.tomkod.com)

Please check your firewall in case of failure.

## Activation form

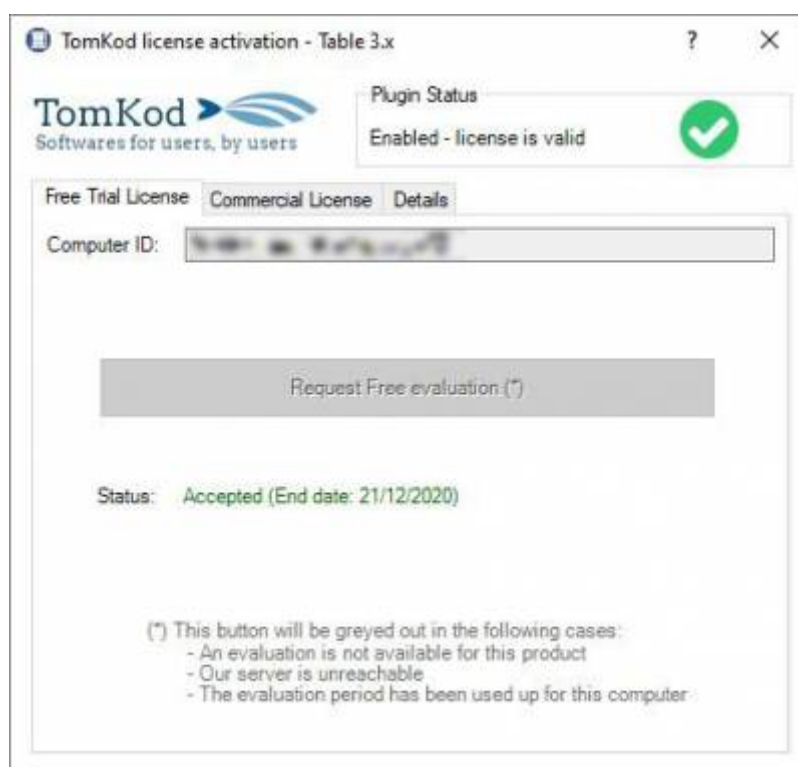
The activation window automatically shows up when the plugin is loading and a valid license or trial is not registered. If you want to see, change or remove your license while the plugin is already loaded, you can use the Rhino commands **PluginName\_License**.

Activation status is always visible on the upper right corner of the form, if the icon is green your plugin will be enabled:



## Trial Tab

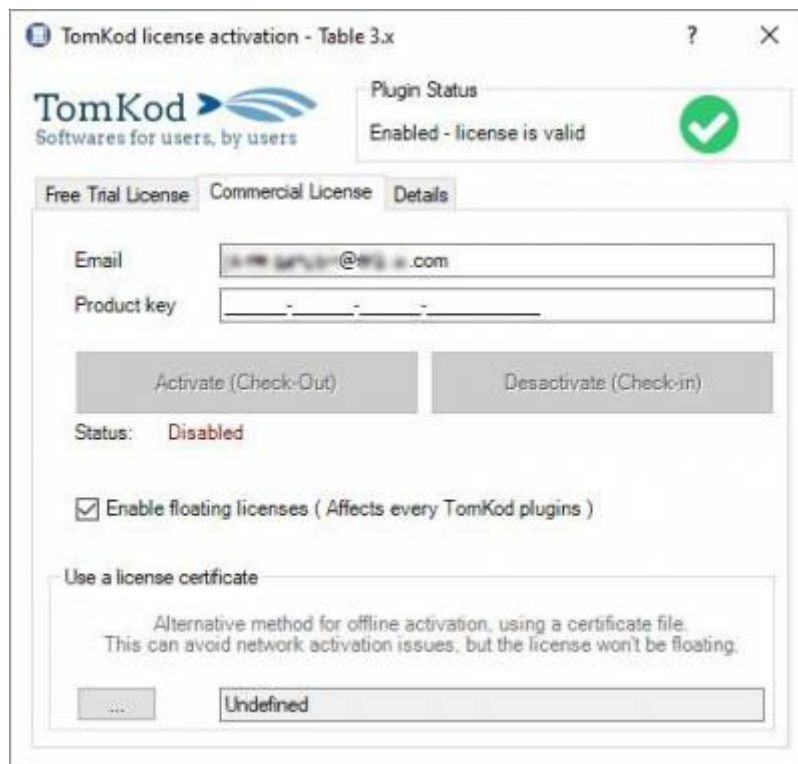
This first tab is dedicated to the trial requests. Your trial status is displayed, and the button is disabled if a trial is not available for your computer (Your trial has already been activated, or the server is unreachable)



## Commercial Tab

This tab's two main buttons let you Check-out (Activate) or Check-in (Desactivate) your license from

our license server.



When the checkbox *“Enable floating licenses”* is checked, every TomKod's plugin will try to deactivate the license automatically when closing (Making it available for another of your computers)

Finally, a license certificate (\*.TkLic) can be selected at the bottom of this tab. It allows to activate a license offline, but the license won't be floating anymore. If you need one, contact us at <https://www.tomkod.com/contact/>

## Toolbar

The toolbars for Rhino are always included in your plugins installation directory, or can be downloaded [here](#).

You just have to drag/drop the file “Tomkod.rui” to a rhino window to install them.

---

## Commands

### NST\_About

This command can be used only from the command line prompt. It displays the plugin's current revision and license status.



add image

## NST\_License

This command can be used only from the command line prompt. It displays the plugin's activation form.

See [license\\_activation](#).

---

## CheckPlatCut



TO DO: Add description

## Walkthrough

1. Launch the command
2. First Step ?
3. Second Step ?



TO DO: Add animated gif

## Scripted mode

No scripted mode available for this command.

---

## IDsToUserText



TO DO: Add description

## Walkthrough

1. Launch the command
2. First Step ?
3. Second Step ?



TO DO: Add animated gif

Scripted mode

No scripted mode available for this command.

SolidMass



TO DO: Add description

Walkthrough

- 1. Launch the command
- 2. Select an extrusion or a closed polysurface
- 3. The object's mass and centroid coordinates will be displayed in command line feedback



TO DO: Add animated gif

Options

Material	<div>Either a material from the editable material list or “Other”, which will ask to manually enter a volumic mass</div> <div><div>Materials</div><table><tr><th>English Name</th><th>Local Name</th><th>Value (Kg/m3)</th></tr><tr><td>Steel</td><td>Steel</td><td>7850</td></tr><tr><td>Aluminium</td><td>Aluminium</td><td>2700</td></tr><tr><td>BiMetal</td><td>BiMetal</td><td>5275</td></tr></table><div><div>Create</div><div>Edit</div><div>Delete</div><div>Add Defaults</div></div></div>	English Name	Local Name	Value (Kg/m3)	Steel	Steel	7850	Aluminium	Aluminium	2700	BiMetal	BiMetal	5275
English Name	Local Name	Value (Kg/m3)											
Steel	Steel	7850											
Aluminium	Aluminium	2700											
BiMetal	BiMetal	5275											
WeldingPercentage	The margin to add to the result to consider welding masses (%)												
DrawCentroidPoints	If enabled, a point will be added to the model at the centroid's location												

## Scripted mode

No scripted mode available for this command.

---

## IntersectSolids



TO DO: Add description

## Walkthrough

1. Launch the command
2. First Step ?
3. Second Step ?



TO DO: Add animated gif

## Scripted mode

No scripted mode available for this command.

---

## ExportPartsToDxf



TO DO: Add description

## Walkthrough

1. Launch the command
2. First Step ?
3. Second Step ?



TO DO: Add animated gif

## Scripted mode

No scripted mode available for this command.

---

## Bracket



TO DO: Add description

## Walkthrough

1. Launch the command
2. First Step ?
3. Second Step ?



TO DO: Add animated gif

## Scripted mode

No scripted mode available for this command.

---

## Cuto



TO DO: Add description

## Walkthrough

1. Launch the command
2. First Step ?
3. Second Step ?



TO DO: Add animated gif



## Scripted mode

No scripted mode available for this command.

---

## Rails



TO DO: Add description

## Walkthrough

1. Launch the command
2. First Step ?
3. Second Step ?



TO DO: Add animated gif

## Scripted mode

No scripted mode available for this command.

---

## GeneratePlateMarking



TO DO: Add description

## Walkthrough

1. Launch the command
2. First Step ?
3. Second Step ?



TO DO: Add animated gif

## Scripted mode

No scripted mode available for this command.

---

## DevelopPlanarPlate



TO DO: Add description

## Walkthrough

1. Launch the command
2. First Step ?
3. Second Step ?



TO DO: Add animated gif

## Scripted mode

No scripted mode available for this command.

---

1)

Rhino 6.15 or later

2)

Tested up to Rhino 7.1

3)

Rhino 6 or later only, with graphic user interface for Rhino7 only

From:  
<https://wiki.tomkod.com/> - TomKod knowledge base

Permanent link:  
<https://wiki.tomkod.com/doku.php?id=start:plugins:navalstructuretoolkit:nst-usermanual&rev=1613989904>

Last update: 2021/02/22 11:31

