

# Marine Weight Schedule - User Manual

## Introduction

*Marine Weight Schedule* is a plugin for Rhino 3D designed to generate - from a vessel's 3D model - a bill of masses/inertias, as well as a Bill Of Materials. It takes into account points, curves, surfaces, solids and blocks, and uses the parameters from the layers' names to apply the unitary/lineic/surfacic/volumic masses, with a margin percentage applied.

A command is also provided to generate a hydrostatic report at a given height interval (based on Rhino hydrostatics features)

Both reports will be generated as excel files (.xlsx) based on a customizable template, but Microsoft excel doesn't need to be installed on the computer.

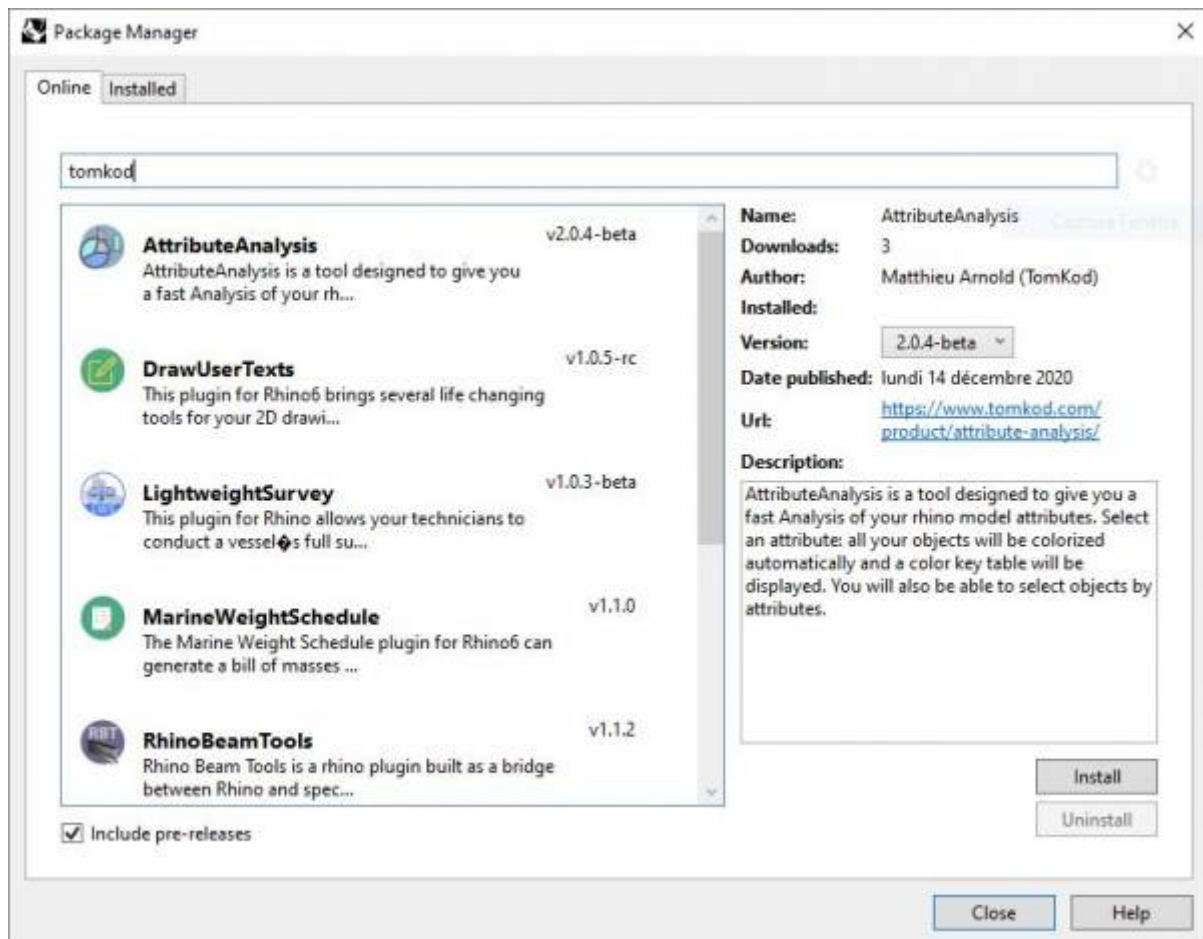
## Plugin installation

### Overview

The plugin installer can be downloaded at: <https://www.tomkod.com/product/marine-weight-schedule/>  
A free trial is included, and yearly licenses can be purchased on the aforementioned page.  
*Marine Weight Schedule* works for Rhino 6<sup>1)</sup> and Rhino7<sup>2)</sup>.

### Yak

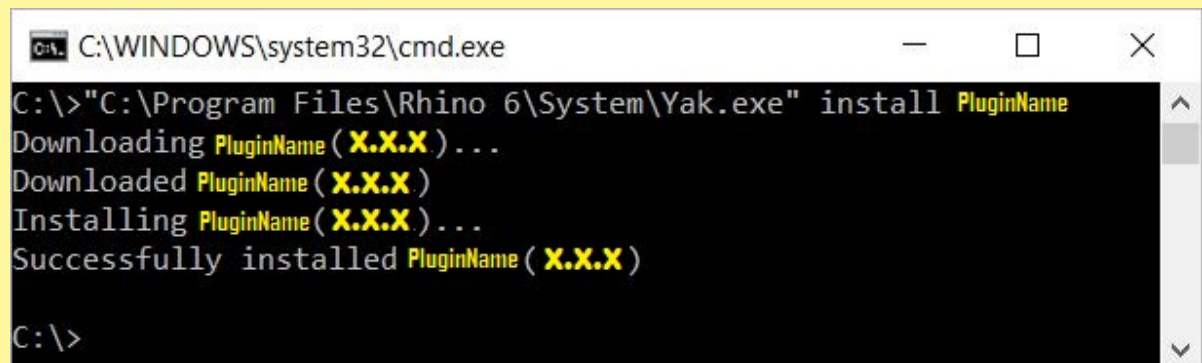
Our plugins are also compatible with Yak, Rhino's new package manager <sup>3)</sup>, which is basically an application store for Rhino. You just need to call Rhino's command **PackageManager**:



You can also install from the repository with the following command line:

```
"D:\Program Files\Rhino 6\System\Yak.exe" install 'PluginName'
```

If you add this in a batch file (\*.bat) at windows startup, it is probably the best way to keep all your plugins up-to-date 😊



## License activation

## Prerequisites

The free evaluation can be used once per computer, and requires network access to [www.license.tomkod.com](http://www.license.tomkod.com)

The license activation requires network access to [www.tomkod.com](http://www.tomkod.com)

Please check your firewall in case of failure.

## Activation form

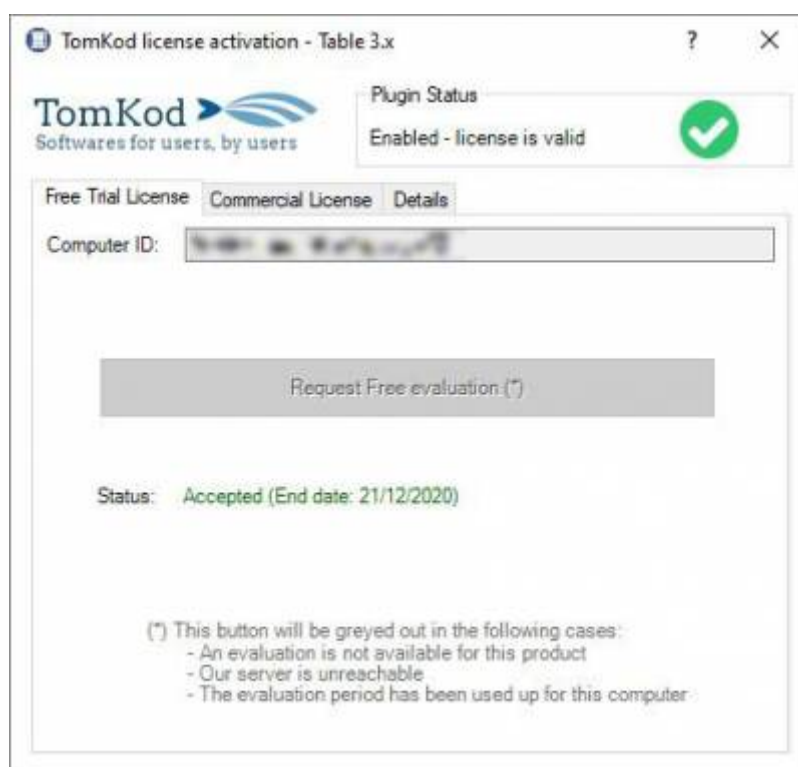
The activation window automatically shows up when the plugin is loading and a valid license or trial is not registered. If you want to see, change or remove your license while the plugin is already loaded, you can use the Rhino commands **PluginName\_License**.

Activation status is always visible on the upper right corner of the form, if the icon is green your plugin will be enabled:



## Trial Tab

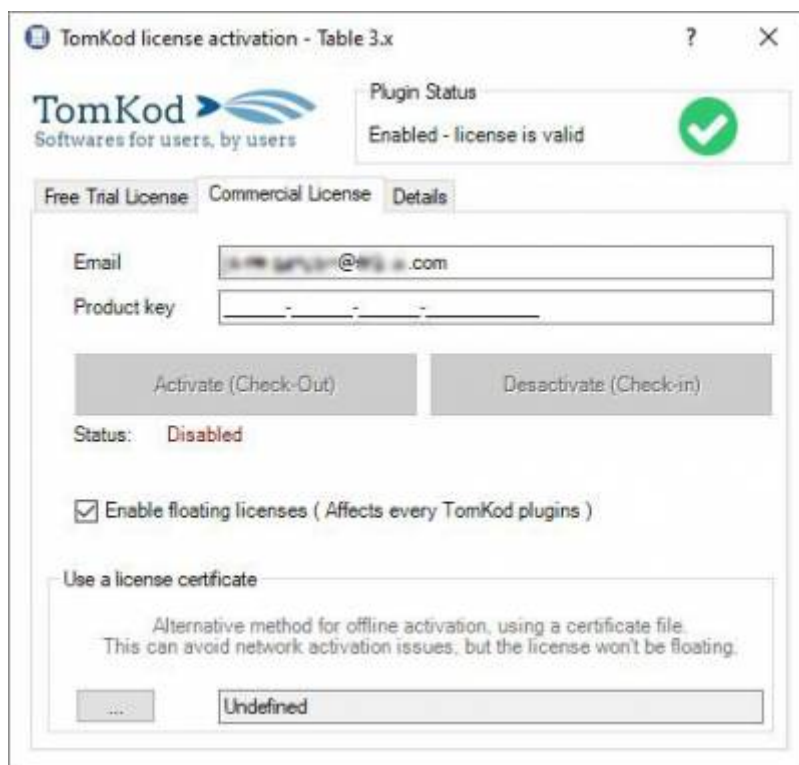
This first tab is dedicated to the trial requests. Your trial status is displayed, and the button is disabled if a trial is not available for your computer (Your trial has already been activated, or the server is unreachable)



## Commercial Tab

This tab's two main buttons let you Check-out (Activate) or Check-in (Desactivate) your license from

our license server.



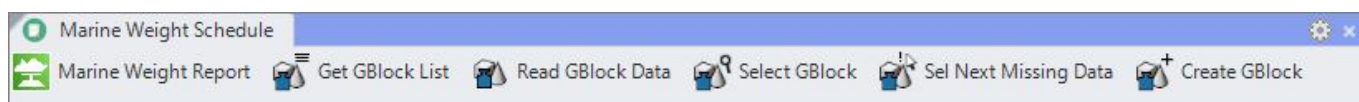
When the checkbox *“Enable floating licenses”* is checked, every TomKod's plugin will try to deactivate the license automatically when closing (Making it available for another of your computers)

Finally, a license certificate (\*.TkLic) can be selected at the bottom of this tab. It allows to activate a license offline, but the license won't be floating anymore. If you need one, contact us at <https://www.tomkod.com/contact/>

## Toolbar

The toolbars for Rhino are always included in your plugins installation directory, or can be downloaded [here](#).

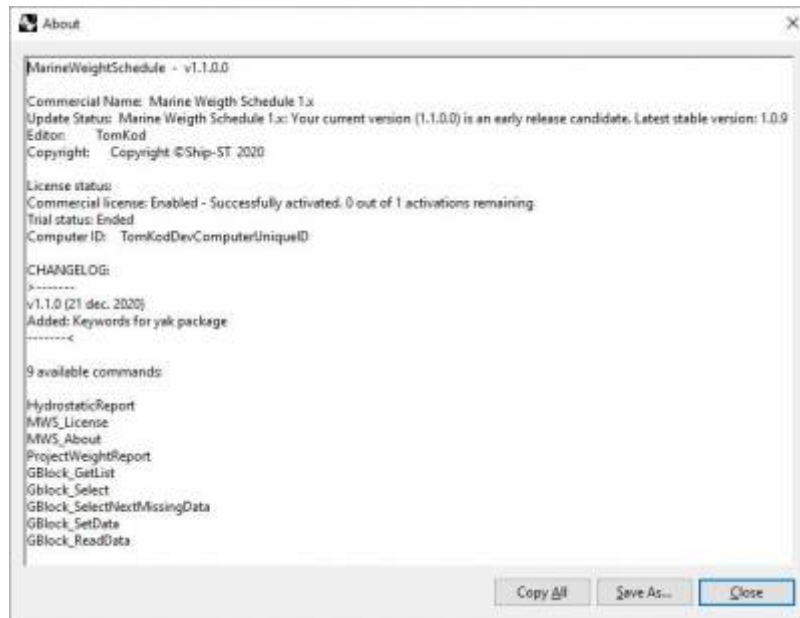
You just have to drag/drop the file “Tomkod.rui” to a rhino window to install them.



## Features and commands

### MWS\_About

This command can be used only from the command line prompt. It displays the plugin's current revision and license status.



## MWS\_License

This command can be used only from the command line prompt. It displays the plugin's activation form.

See [license\\_activation](#).

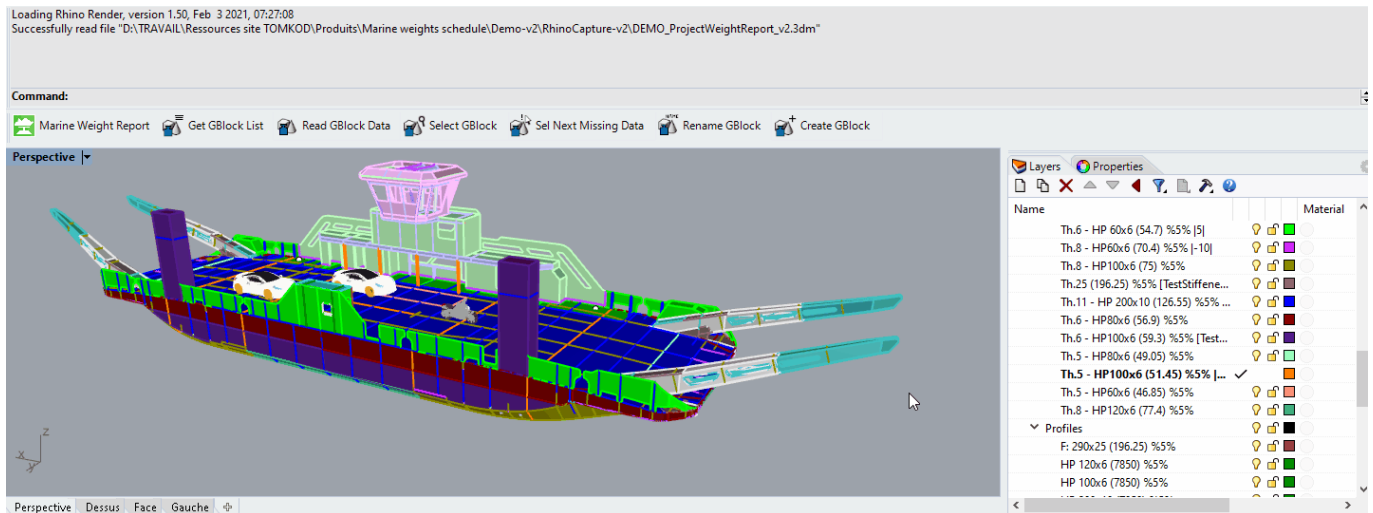
## ProjectWeightReport

Computes the whole model masses, as well as a Bill Of Materials<sup>4)</sup> and generates an excel report.

## Walkthrough

For each layer<sup>5)</sup>, the command will retrieve the *Mass*, *Margin* and *Vertical offset* values from the layer name<sup>6)</sup>, then:

1. For each rhino object, the actual mass and gravity center will be computed, using the layer values. The layer's *Mass* will be used differently, depending on the object's type: punctual mass for Points, lineic mass for curves, surface mass for surfaces<sup>7)</sup>, and volumic mass for closed polysurfaces.
2. At the same time, the Bill-of-Materials will be created internally.
3. An excel report will be created.



## Model preparation

The fundamental idea of this plugin is to match data from the model's objects and their layer. For this reason, each layer should contain only one specific material. *For example:*

- The layer **Deck1:SectionB:Nuts** could contain only points, and the layer's (*mass*) information would be used as a punctual mass for each nut.
- The layer **Deck1:SectionB:plates** could contain only surfaces, and the layer's (*mass*) information would be used as a surface mass for each plate.

## Layers naming convention

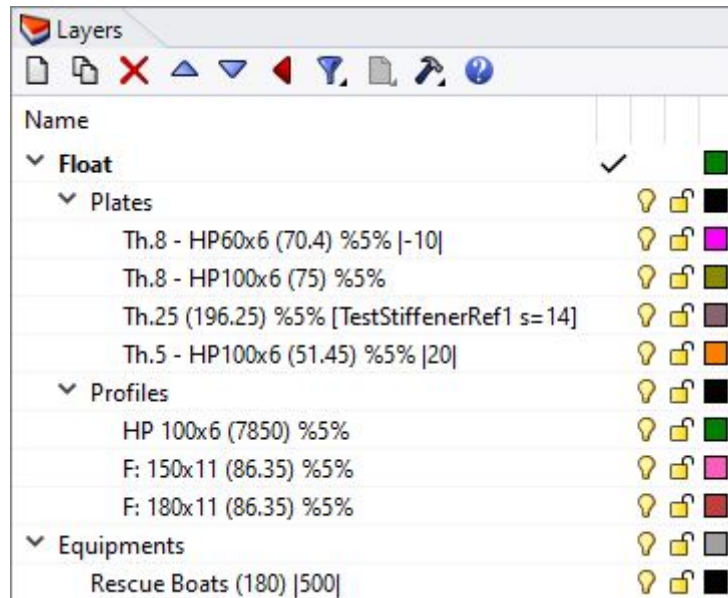
The document's layers should follow the following naming convention:

```
LayerName *MaterialName* (Mass) %Margin% |VerticalOffset|
```

where:

- **Mass** will be the ponctual/lineic/surfacic/volumic mass
- **Margin** (optional) will be the percentage to add to the object's mass.
- **VerticalOffset** (optional) will be the the vertical offset to apply to the layer's masses
- **MaterialName**<sup>8)</sup> (optional) will the material's name. In the Bill-of-Material, the materials are displayed in a specific column.

Two layers with the same name but different materials will not be grouped together.



### Particular case for Stiffeners

A specific naming convention has been added to properly count the stiffeners in the Bill-of-Materials, to consider the scenarii explained below.



Those particular cases only impact how materials will be counted in the Bill-of-Material tab. The weight report results won't be impacted.

#### • Implicit stiffeners

There are some cases where you don't want/need to create an actual geometry for your structure stiffeners, for example when you are at the early stage of your project. *Implicit stiffeners* let you count the required stiffener lengths relative to the layer's metal sheet's areas.

```
LAYERNAME: MyLayerName (Mass) %Margin% |VerticalOffset| [StiffenerName s=value]
```

In the Bill-of-Material, this would create two outputs: an area for the surfaces in "MyLayerName", and a length for their stiffeners.



'StiffenerName Length' = 'MyLayerName Area' / s

For example:

```
Th.6 (56.9) %5% [HP80x6 s=49.05]
```



Since v1.1.3, the implicit stiffeners can also have their material names defined with a

specific syntax:



```
LAYERNAME:    MyLayerName *MaterialName* (Mass) %Margin%  
|VerticalOffset| [StiffenerName s=value *MaterialName*]
```

- **Stiffeners defined as curves in the model**

Two kind of curves-defined stiffeners can be used:

- Folded plates

```
LAYERNAME:    W:120x6 BF60
```

This will be counted as one surface, Thickness 6, width=120+60. Thus the result in the Bill-of-materials will be:



'Th.6 plate Area' = length x (120+60)

- Profile with flat plate

```
W:120x6 F:80x8
```

This will count as one surface, Thickness 6, width=120, plus one profile 80x8



In this case, the command will output an area for the plate and a length for the profile:

'Th.6 plate Area' = length x 120

'80x8 profile length ' =length

- **Stiffeners defined as surfaces in the model**

In some cases, you might want to represent your stiffeners as a 3D surface in the model, but count them as lineic outputs in the Bill-of-Materials because they are technically profiles.

```
LAYERNAME:    F:80x8
```

This would output:



'80x8 profile Length' = area / 80





Bill of masses detailed sheets for Volumes, surfaces, curves, and points:

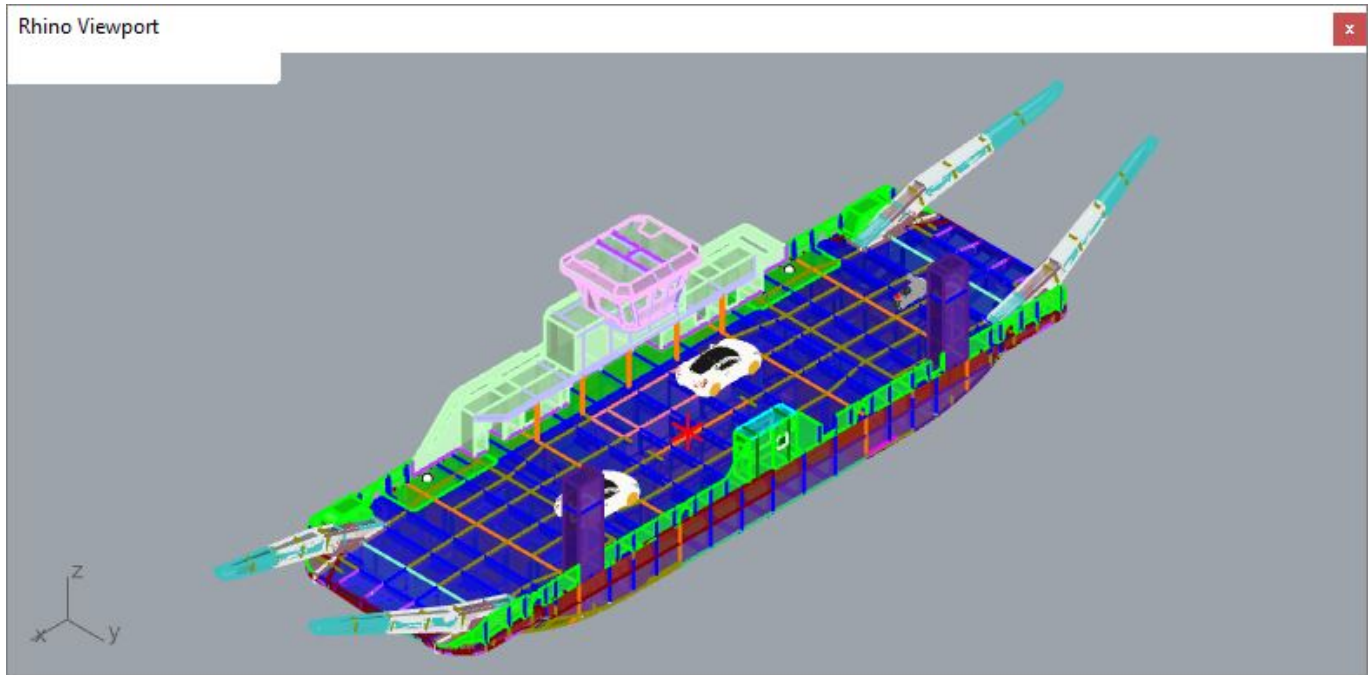
A2															
TomKod Softwares for users, by users															
PROJECT : XXXX															
MASS SUMMARY-re0															
Customer :															
Last update: 18/02/2021 (13:49)															
Reference: DEMO_Project\WeightReport_v2.3dm															
BILL OF VOLUMIC MASSES															
Volumetric masses															
Item															
Volume (mm³)															
Volumic mass (kg/m³)															
Margins															
Mass (kg)															
Xg (mm)															
Yg (mm)															
Zg (mm)															
Ixx (mm⁴)															
Iyy (mm⁴)															
Izz (mm⁴)															
Ixx (kg.mm⁴)															
Iyy (kg.mm⁴)															
Izz (kg.mm⁴)															
Bi-Metal															
Steel-Profile:Round Ø20															
Float-Profile:HP 120x6															
Float-Profile:HP 100x6															
Float-Profile:HP 200x10															
Float-Profile:Round Ø30															
507.8957 -62.3391 -820.693 1739.091															
4.76E+09 7.46E+10 7.88E+10															

A															
TomKod Softwares for users, by users															
PROJECT : XXXX															
MASS SUMMARY-re0															
Customer :															
Last update: 05/01/2021 (15:13)															
Reference: DEMO_Project\WeightReport.3dm															
BILL OF PONCTUAL MASSES															
Points masses															
Item															
Points quantity															
Ponctual mass (kg)															
Margins															
Mass (kg)															
Xg (mm)															
Yg (mm)															
Zg (mm)															
Ixx (mm⁴)															
Iyy (mm⁴)															
Izz (mm⁴)															
Ixx (kg.mm⁴)															
Iyy (kg.mm⁴)															
Izz (kg.mm⁴)															
Equipments // Tesla model R															
Equipments // MissingData - Bike Harley															
Equipments:Rescue Boats															
4960 2124.514 -93.28 3408.451															
2.29E+10 1.96E+11 2.1869E+11															

Bill of materials:

A															
TomKod Softwares for users, by users															
PROJECT : XXXX															
MASS SUMMARY-re0															
Customer :															
Last update: 18/02/2021 (13:49)															
Reference: DEMO_Project\WeightReport_v2.3dm															
BILL OF MATERIALS															
LAMINATED PLATES															
F: 100x11															
F: 100x8															
F: 120x11															
F: 150x11															
Th.6															
Th.8															
EXTRUDED PROFILES															
100x10															
60x6															
80x10															
80x6															
OTHERS															
Equipments // Bike Harley															
Equipments // Tesla model R															
Rescue Boats															

A custom ViewPort is created with the gravity center displayed:



## Options

No option available.

## Customization

The excel report template "PWE\_Model.xlsx" can be modified in the plugin's install directory, usually:

`%AppData%\McNeel\Rhinoceros\7.0\Plug-ins\Marine Weight Schedule for RH6-RH7  
(dac6da37-23fc-4ad6-9b46-33a2cad9e13b)\VersionNumber`

(Adapt Rhino's version if needed, as well as the plugin's version)

It is recommended to edit only the text values and the logos while keeping the document's general layout.

---

## HydrostaticReport

Computes a hydrostatic analysis at different heights and generates an excel report.

## Walkthrough

The hull's surface or polysurface is selected as input. Once validated, Rhino's hydrostatic calculation is run at various heights as defined in options, and an excel report is generated.

	A	B	C	D	E	F	G	H	I	J	K	L
1												
2												
3												
4												
5												
6												
7												
8												
9												
10												
11												
12												
13												
14												
15												
16												
17												

## Options

<b>TEMin</b>	Minimum height (mm)
<b>TEmax</b>	Maximum height (mm)
<b>Delta</b>	Distance between two tested height (mm)
<b>Density</b>	Water Density
<b>AutoMinMax</b>	Detect TEmin and TEmax values from geometry (Only available when a geometry is selected)

## Customization

The excel report template "Hydro\_Model.xlsx" can be modified in the plugin's install directory, usually:

%AppData%\McNeel\Rhinoceros\7.0\Plug-ins\Marine Weight Schedule for RH6-RH7  
(dac6da37-23fc-4ad6-9b46-33a2cad9e13b)\VersionNumber  
(Adapt Rhino's version if needed, as well as the plugin's version)

It is recommended to edit only the text values and the logos while keeping the document's general layout.

## GBlock\_SetData

Adds gravity center and mass information to a block. GBlocks are considered by the command *ProjectWeightReport*, which makes them extremely useful for your pieces of equipment.

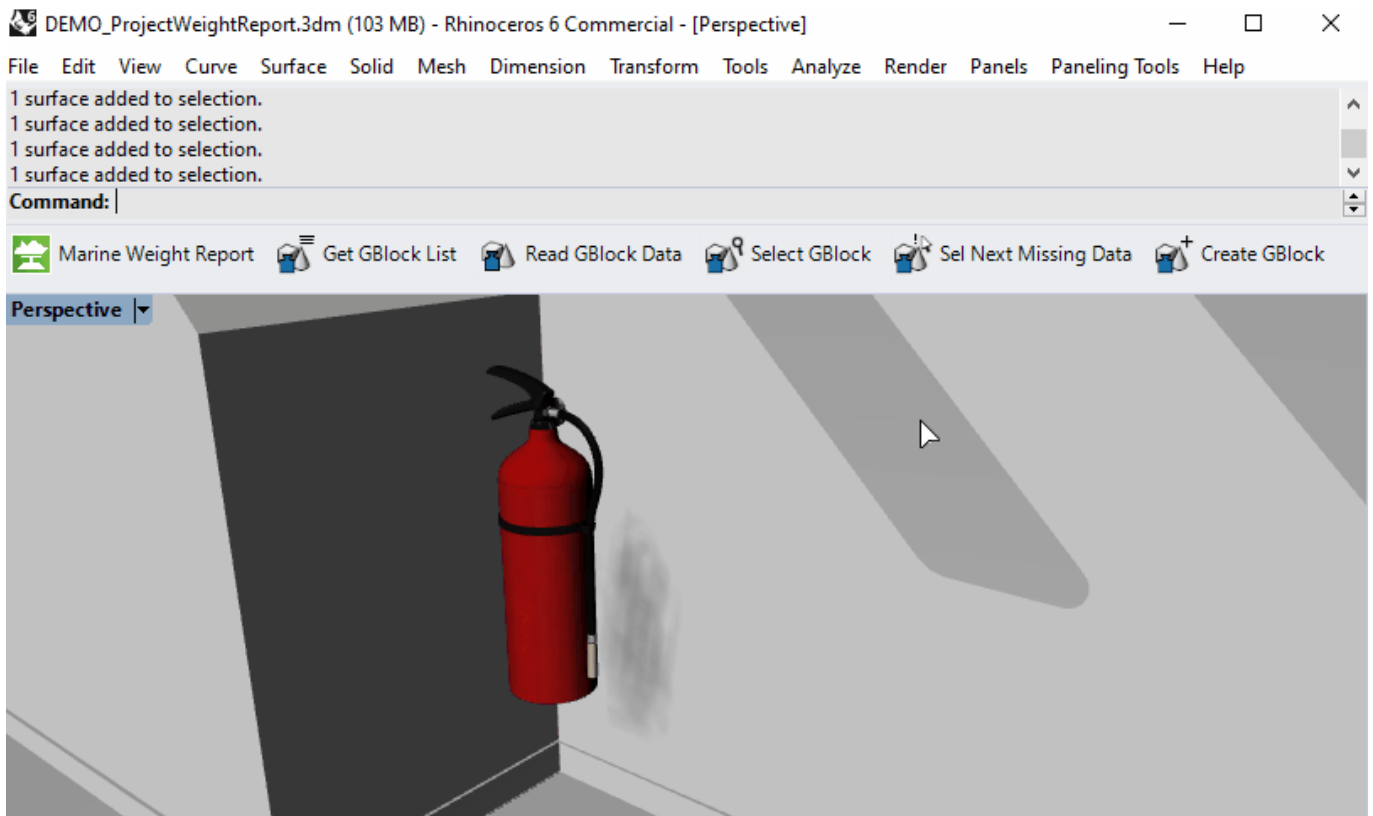


When using this command on an existing GBlock, its gravity center, mass information, and name will be overridden.

This is the only way to edit a GBlock name or data.

## Walkthrough

1. Start the command
2. Pick a rhino block<sup>11)</sup> in the model
3. Pick the GBlock's gravity center
4. Enter the GBlock's mass
5. Enter the GBlock's name (By default, Rhino's block name is used)
6. Click OK or press Enter

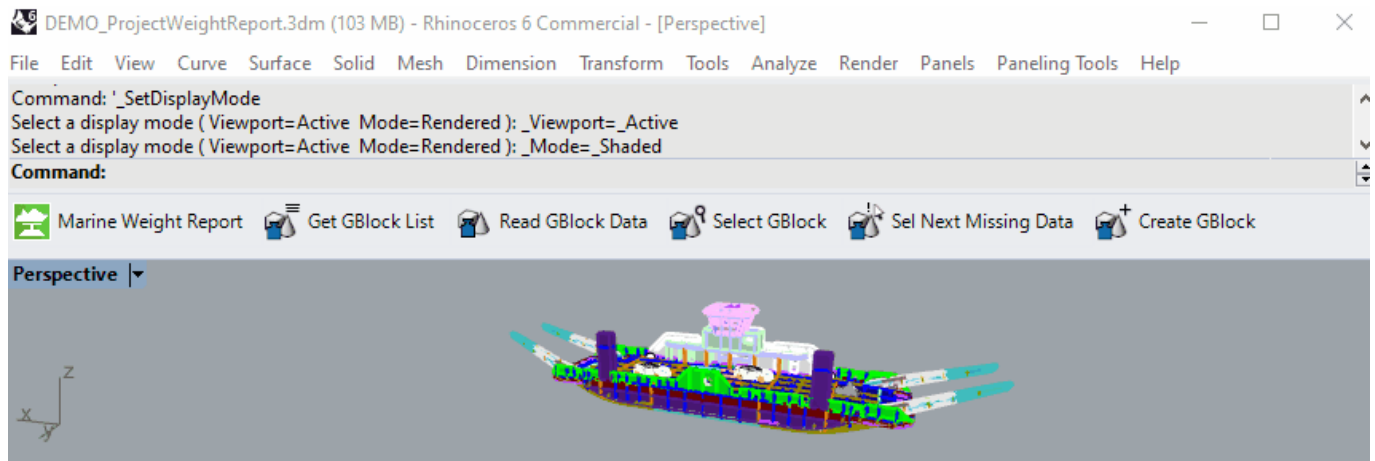


## GBlock\_GetList

Lists every existing GBlock name and masses to the command line.

## Walkthrough

1. Start the command
2. A window is shown with details about every block instances in the model



## GBlock\_ReadData

Reads a GBlock data.

### Walkthrough

1. Select a GBlock
2. The data is shown in the command line:

```
Command: _GBlock_ReadData
Please select a block instance
extinguisher: 3,6 kg (-9960,813,-5131,802,3834,316)
Command: |
```

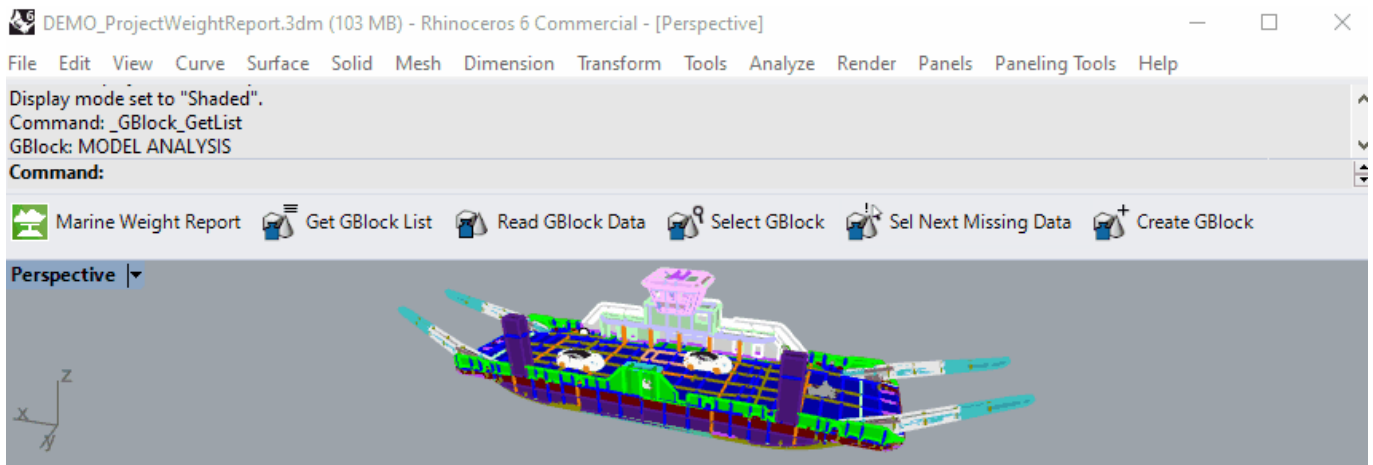
## Gblock\_Select

Select a block by their GBlock Name. (From a list of available GBlock names)

### Walkthrough

1. Launch the command
2. Pick a GBlock name from the list
3. Every instance of this GBlock will be selected in the model



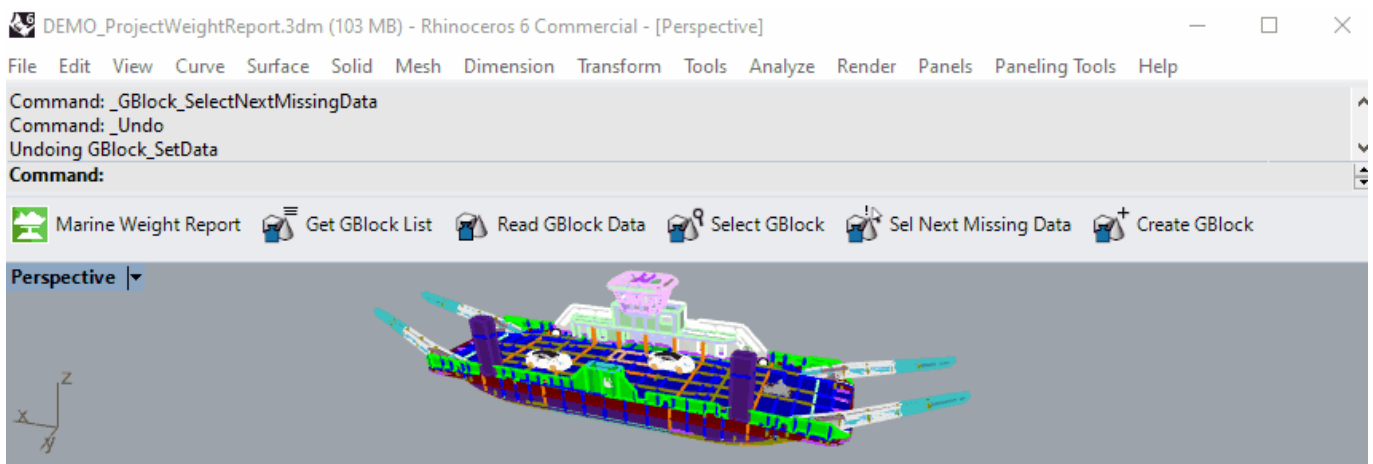


## GBlock\_SelectNextMissingData

Selects the next block in the document which is not a GBlock (gravity center and mass are undefined)

### Walkthrough

1. Launch the command
2. The commands loops between the non-GBlocks instances in the model. (Press ESC to leave)



## GBlock\_Rename

Renames a GBlock definition (Every instance will be renamed)

### Walkthrough

1. Launch the command
2. Pick a Gblock from the list
3. Enter a new name for the GBlock

1)

Rhino6.15 or later

2)

Tested up to Rhino 7.1

3)

Rhino 6 or later only, with graphic user interface for Rhino7 only

4)

v1.0.4 and later versions

5)

The whole model or worksession will be used

6)

Read "Model preparation" below

7)

To avoid errors, opened polysurfaces won't be allowed

8)

Since v1.1.3

9)

instances references

10)

.xlsx

11)

Instance reference

From:  
<https://wiki.tomkod.com/> - **TomKod knowledge base**

Permanent link:  
<https://wiki.tomkod.com/doku.php?id=start:plugins:marineweightschedule:mws-usermanual&rev=1630672333>

Last update: **2021/09/03 14:32**

