

Attribute Analysis - User Manual

Introduction

Attribute Analysis is a plugin for Rhino 3D, designed to give you a fast Analysis of your Rhino model attributes.

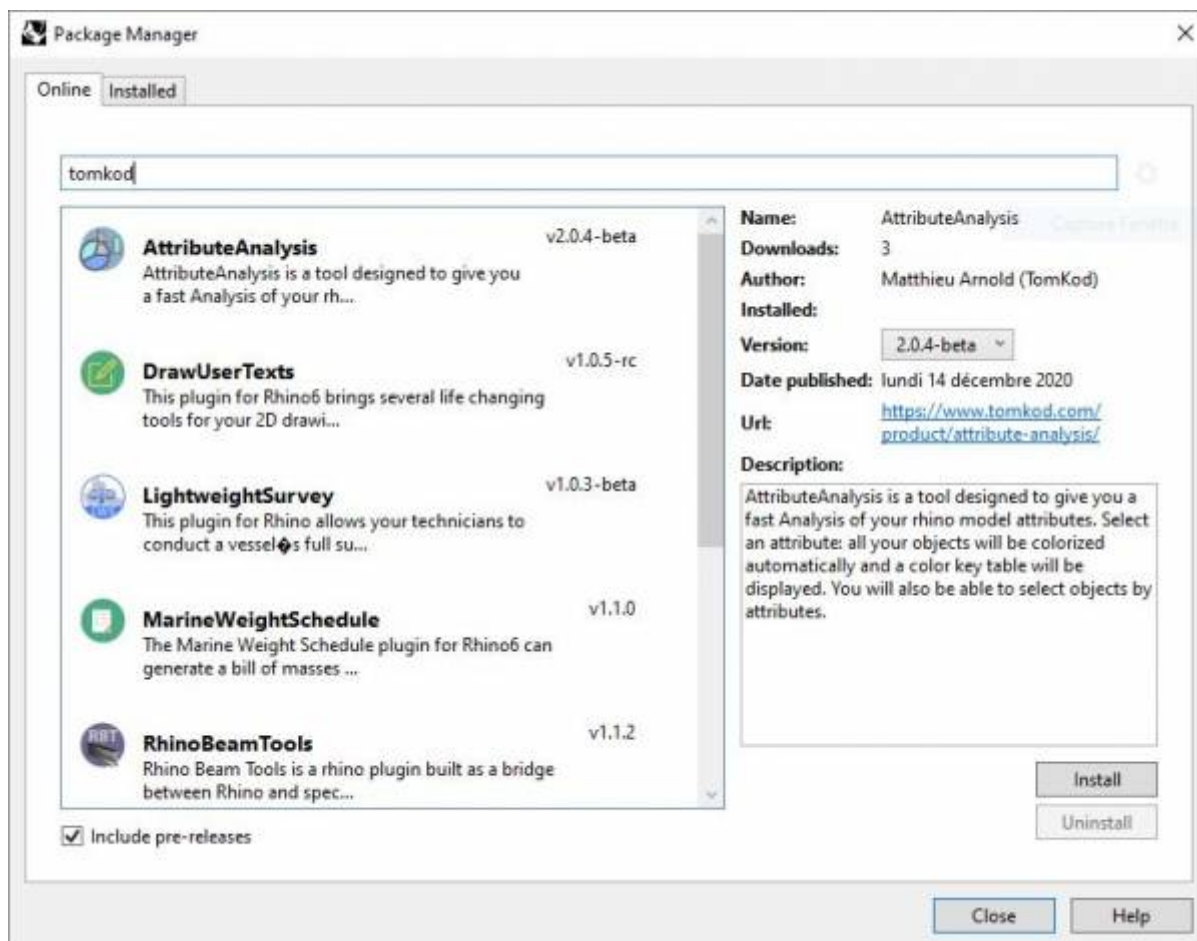
Plugin installation

Overview

The plugin installer can be downloaded at: <https://www.tomkod.com/product/attribute-analysis/>
A free trial is included, and yearly licenses can be purchased on the aforementioned page.
Attribute Analysis works for Rhino 5 ¹⁾, Rhino 6 ²⁾, Rhino7³⁾, and as standalone software ⁴⁾.

Yak

Our plugins are also compatible with Yak, Rhino's new package manager ⁵⁾, which is basically an application store for Rhino. You just need to call Rhino's command **PackageManager**:



You can also install from the repository with the following command line:

```
"D:\Program Files\Rhino 6\System\Yak.exe" install 'PluginName'
```

If you add this in a batch file (*.bat) at windows startup, it is probably the best way to keep all your plugins up-to-date 😊



```
C:\WINDOWS\system32\cmd.exe
C:\>"C:\Program Files\Rhino 6\System\Yak.exe" install PluginName
Downloading PluginName (X.X.X)...
Downloaded PluginName (X.X.X)
Installing PluginName (X.X.X)...
Successfully installed PluginName (X.X.X)
C:\>
```

License activation

Prerequisites

The free evaluation can be used once per computer, and requires network access to www.license.tomkod.com

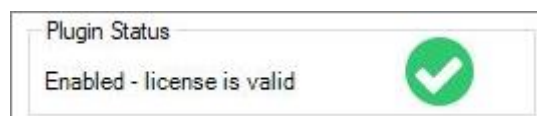
The license activation requires network access to www.tomkod.com

Please check your firewall in case of failure.

Activation form

The activation window automatically shows up when the plugin is loading and a valid license or trial is not registered. If you want to see, change or remove your license while the plugin is already loaded, you can use the Rhino commands **PluginName_License**.

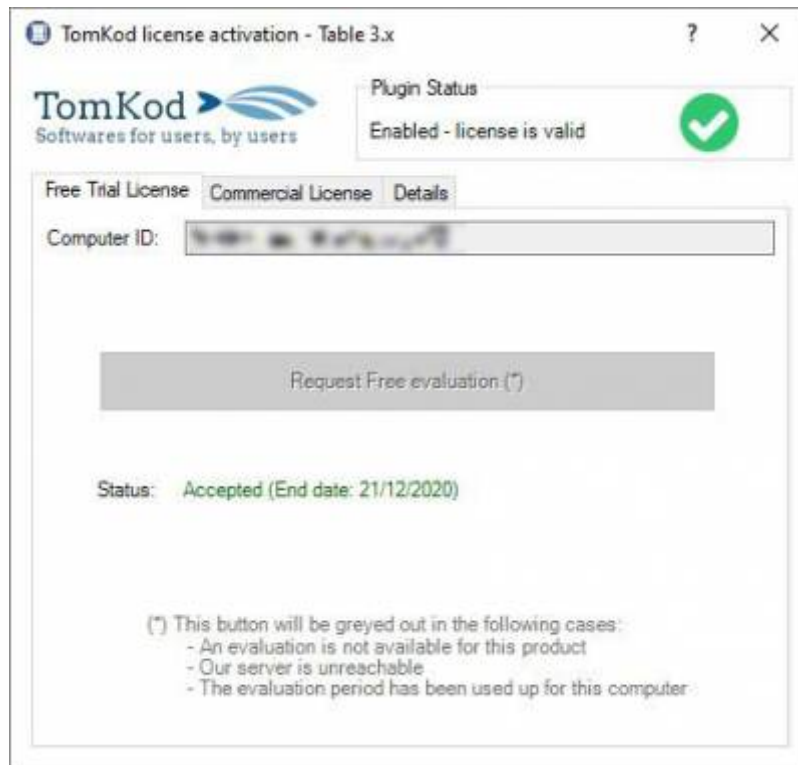
Activation status is always visible on the upper right corner of the form, if the icon is green your plugin will be enabled:



Trial Tab

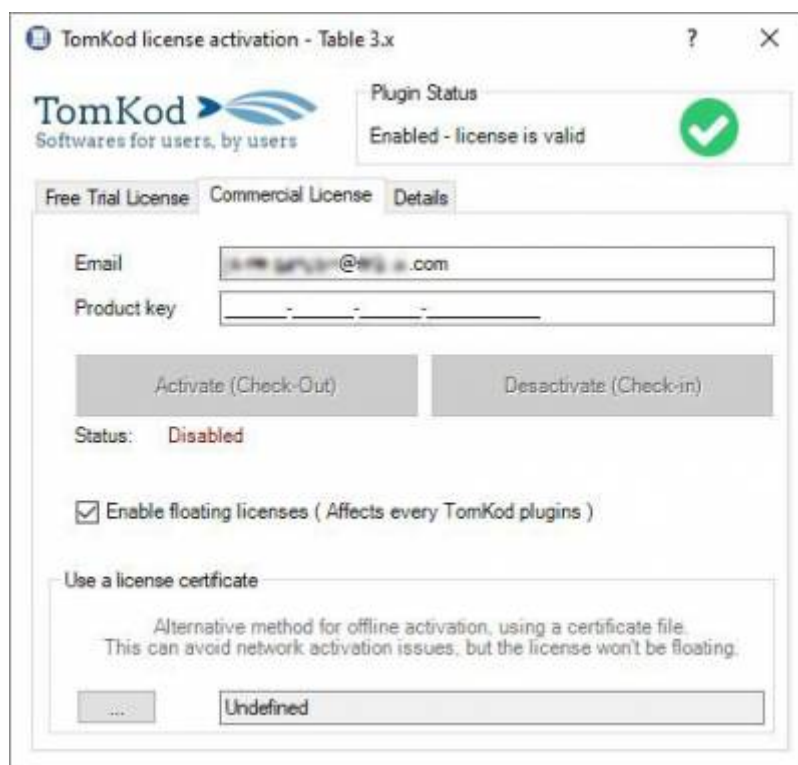
This first tab is dedicated to the trial requests. Your trial status is displayed, and the button is disabled if a trial is not available for your computer (Your trial has already been activated, or the server is

unreachable)



Commercial Tab

This tab's two main buttons let you Check-out (Activate) or Check-in (Deactivate) your license from our license server.



When the checkbox "Enable floating licenses" is checked, every TomKod's plugin will try to deactivate the license automatically when closing (Making it available for another of your computers)

Finally, a license certificate (*.TkLic) can be selected at the bottom of this tab. It allows to activate a

license offline, but the license won't be floating anymore. If you need one, contact us at <https://www.tomkod.com/contact/>

Toolbar

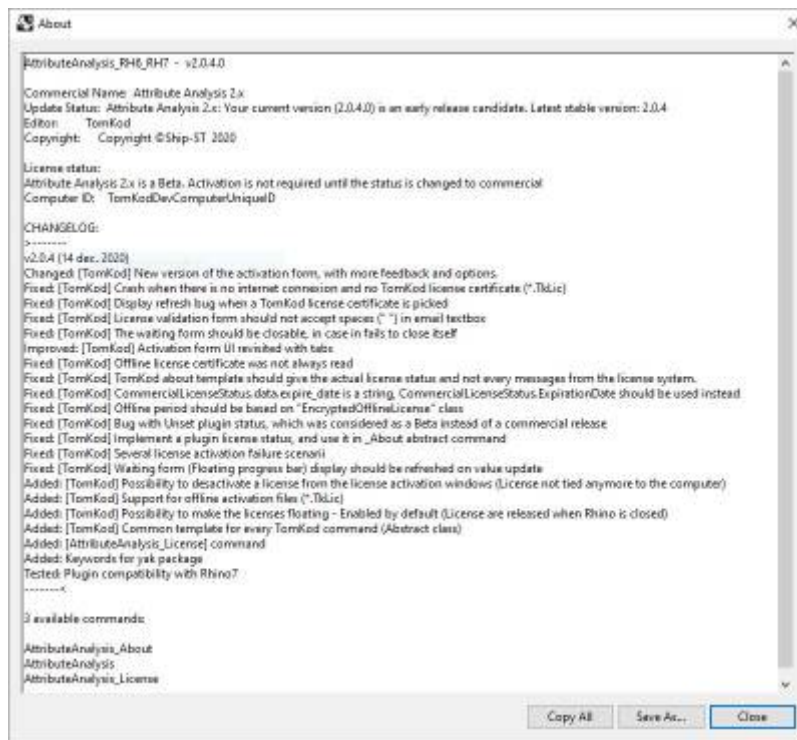
The toolbars for Rhino are always included in your plugins installation directory, or can be downloaded [here](#).

You just have to drag/drop the file "Tomkod.rui" to a rhino window to install them.

Rhino commands

AttributeAnalysis_About

This command can be used only from the command line prompt. It displays the plugin's current revision and license status, as well as the ChangeLog and the list of available commands.



AttributeAnalysis_License

This command can be used only from the command line prompt. It displays the plugin's activation form.

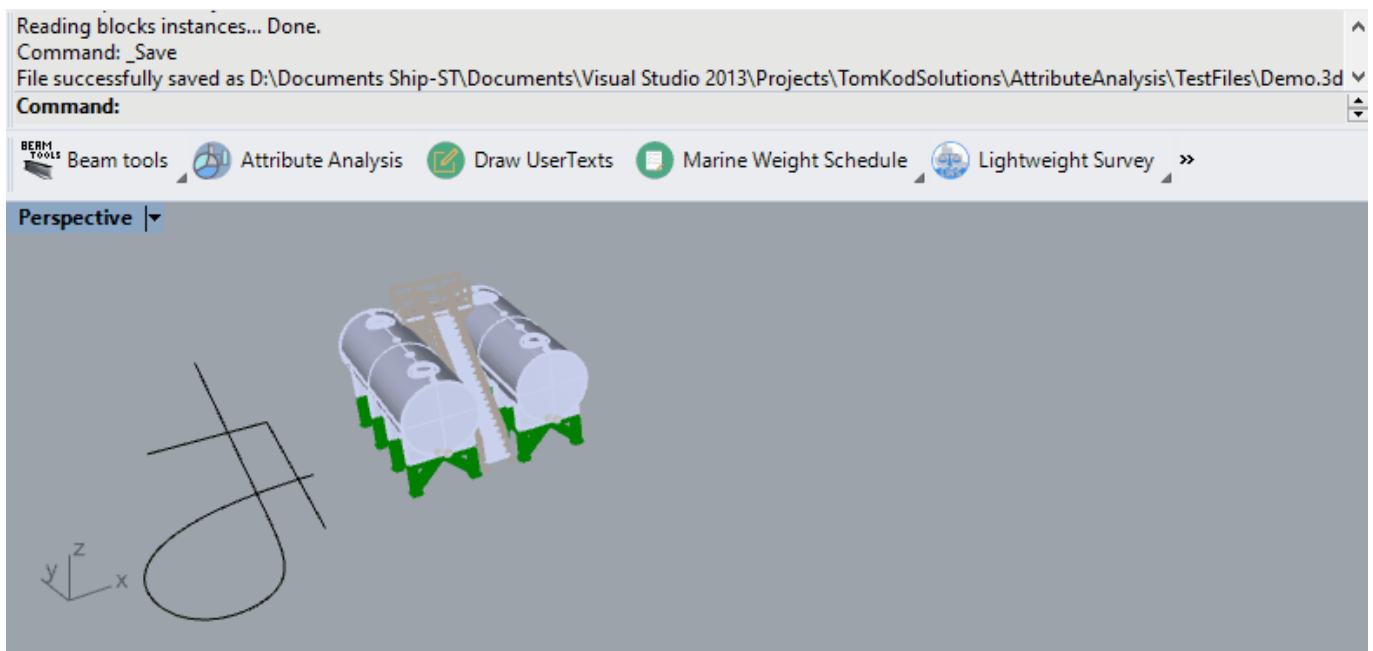
See [license_activation](#).

AttributeAnalysis

This command gives a fast analysis of the model's attributes. It is particularly useful if you want to store the material statuses directly in the model. For example, a part could be marked as *"Draft"*, *"Validated"*, *"Ordered"*, *"Assembled"*, or *"Controlled"*

Walkthrough

1. Launch the command
2. Select an attribute⁶⁾ from the list (Double-click)
3. The [attribute analysis form](#) is shown and the model's objects are colored to match the keys. The stats are also added to the command line history.
4. When the form is closed, the command ends, but the object's selection remains.



Scripted mode

No scripted mode is available for this command.

StandAlone mode

This plugin offers a standalone mode, to check your models' attributes directly for windows explorer.

Rhino is not needed, this will work regardless it is installed or not!!!

Walkthrough

1. Right click on a rhino file
2. Select *"Open with.."*
3. Use the program AttributeAnalysis.exe, available in the plugin's installation folder
4. Select an attribute⁷⁾ from the list (Double-click)

5. The **attribute analysis form** is shown.
6. When the *attribute analysis form* is closed, the attribute selection form is shown again. Close it to close the program.

024.9100.01_Lot 1_ER.3dm	03/02/2016 08:12	Rhino 3-D Model	14 191 Ko
024.9100.01_Lot 1_EV.3dm.zip	17/02/2016 11:36	Dossier compressé	1 280 Ko
024.9100.02_Lot 2_AI.3dm	04/02/2016 11:37	Rhino 3-D Model	13 865 Ko
Demo.3dm	11/01/2021 15:04	Rhino 3-D Model	17 066 Ko
TestMacroCouleur.3dm	08/10/2019 11:24	Rhino 3-D Model	779 Ko
TestModel.3dm	07/11/2019 10:09	Rhino 3-D Model	44 Ko
TestModel_RH5.3dm	07/11/2019 11:26	Rhino 3-D Model	41 Ko



Attribute Analysis Form

This custom form is where the selected usertext's stats will be displayed:

The screenshot shows a window titled "Attribute: Status - 179 visible Objects". It contains a table with the following data:

Color	Qty	%	Value
Orange	30	16,8%	Work in progress
Green	32	17,9%	As Built
Blue	1	0,6%	Ordered
Red	116	64,8%	Undefined

Callouts explain the interface:

- "Change the keys' colors" points to the color columns in the table.
- "The current usertext existing values. Click here to select objects in the model." points to the 'Value' column.
- "Quantities and percentages of every existing value for the current attribute." points to the 'Qty' and '%' columns.
- "Graphical result diagram" points to the pie chart.

The pie chart shows four segments: a large red segment labeled "Undefined", a green segment labeled "As Built", an orange segment labeled "Work i...ogress", and a small blue segment.

1)

Rhino 5.12 or later

2)

Rhino 6.15 or later

3)

Tested up to Rhino 7.1

4)

windows7 and later

5)

Rhino 6 or later only, with graphic user interface for Rhino7 only

6) , 7)

usertext

From:

<https://wiki.tomkod.com/> - TomKod knowledge base

Permanent link:

<https://wiki.tomkod.com/doku.php?id=start:plugins:attributeanalysis:attributeanalysis-usermanual&rev=1615804859>

Last update: **2021/03/15 11:40**

